
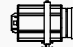
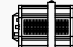







**Projos :**

-  10 x PC1KW  
lentilles claire
-  12 x PC1KW  
martelé
-  3 x PC2KW
-  4 x 613SX
-  2 x 614SX
-  13 x Par 64 CP62
-  4 x pieds 1,5m  
avec coiffe
-  3 Mickey 50W

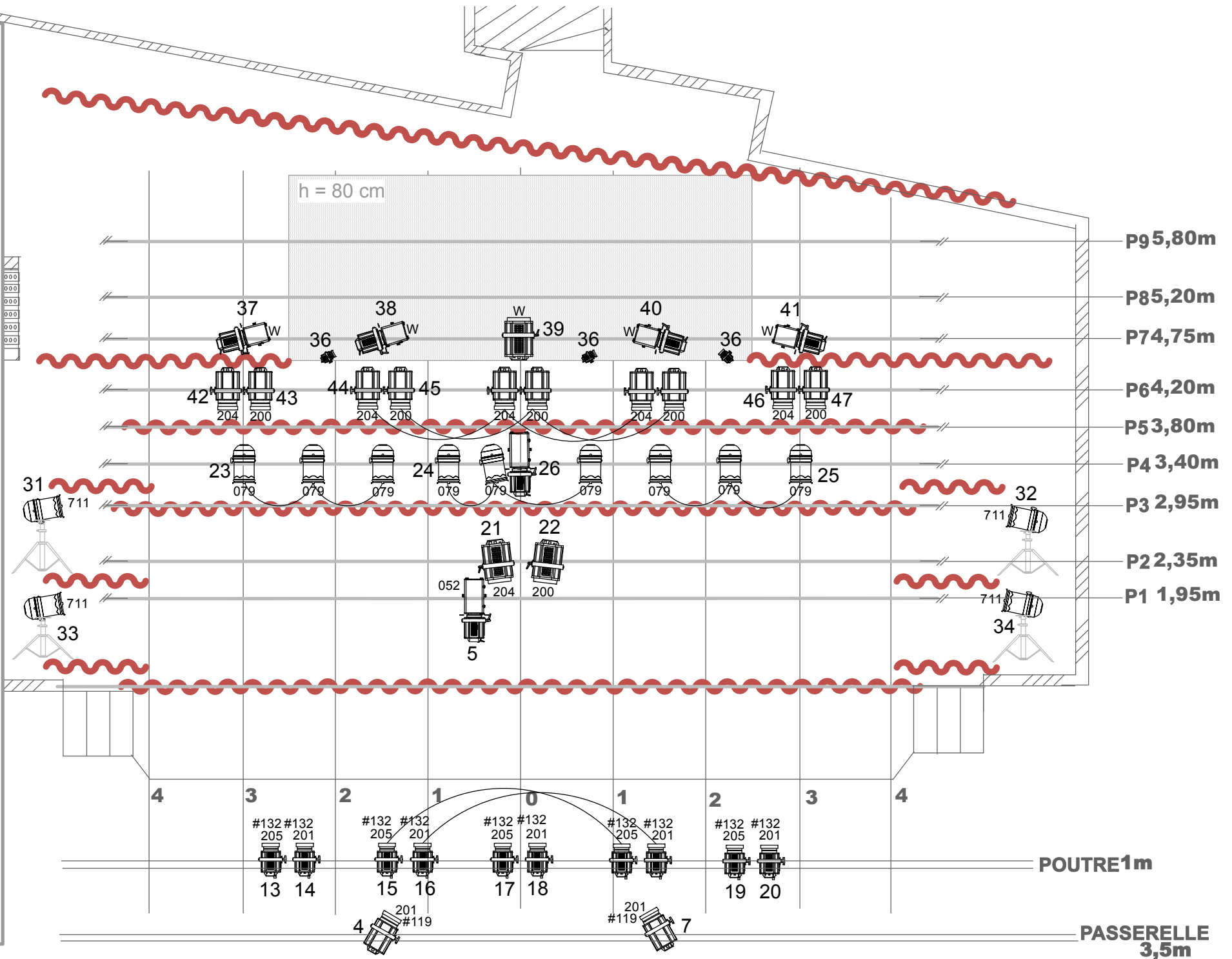
**Gelat :**

- LEE 201 - 7 pc 1kw
- LEE 205 - 5 pc 1kw
- LEE 200 - 5 pc 1kw  
- 1 pc 2kw
- LEE 204 - 5 pc 1kw  
- 1 pc 2kw
- LEE 052 - 1 decoupe 1kw
- LEE 711 - 4 Par 64
- LEE 079 - 9 Par 64
- Rosco 119 - 12 pc 1kw (si pas de martelés contres...)
- Rosco 132 - 10 pc 1kw face

**Scene**

- 33 circuits de 3KW
- Sol Noir
- Pendrillonnage italienne
- Cadreur l'ecran 5m d'ouverture
- Espace de jeu mini 8m x 6m
- Hauteur sous perche 7m

echelle: 1/50ème



PASSERELLE  
3,5m